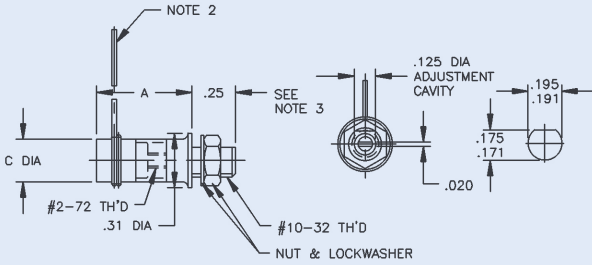
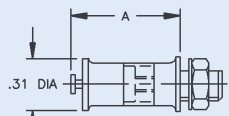


# "TM" & "QM" SERIES - Panel Mount Glass and Quartz Trimmer Capacitors

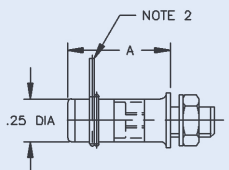
**FIG. 1**



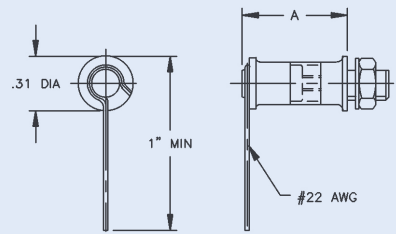
**FIG. 2**



**FIG. 3**



**FIG. 4**



**NOTES:**

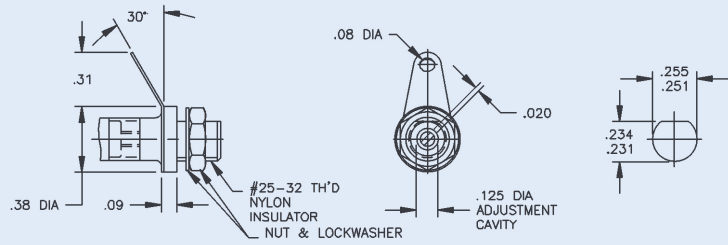
1. Fig. 2, 3 and 4 parts have same end view as Fig. 1.
2. All leads #22 AWG and 2" Min. long except for all TM5-, TM6-, TM10- and QM2- parts which are #24 AWG.
3. Mounting brushing #10-32 x .25 long except for all TM10- and TM15- parts which are #10-32 x .16 long.
4. C diameter of Fig. 1 parts .27 on embedded band units and .25 on all other parts.

Detailed General Specifications on "Glass & Quartz General Specifications" page

IN	MM
0.005	0.13
0.016	0.41
0.020	0.51
0.03	0.76
0.045	1.14
0.08	2.03
0.09	2.29
0.12	3.05
0.125	3.18
0.160	4.06
0.171	4.34
0.175	4.44
0.191	4.85
0.195	4.95
0.230	5.84
0.234	5.94
0.25	6.35
0.251	6.38
0.255	6.48
0.27	6.86
0.28	7.11
0.30	7.62
0.31	7.87
0.33	8.38
0.35	8.89
0.36	9.14
0.37	9.40
0.38	9.65
0.40	10.16
0.41	10.41
0.42	10.67
0.45	11.43
0.47	11.94
0.50	12.70
0.52	13.21
0.55	13.97
0.59	14.99
0.61	15.49
0.63	16.00
0.69	17.53
0.70	17.78
0.75	19.05
0.81	20.57
0.83	21.08
0.91	23.11
0.92	23.37
0.98	24.89
1.00	25.40
1.06	26.92
1.08	27.43
1.09	27.69
1.13	28.70
1.16	29.46
1.17	29.72
1.22	30.99
1.59	40.39
1.66	42.16
1.67	42.42
1.69	42.93
1.75	44.45
1.77	44.96
1.91	48.51
1.98	50.29
2.00	50.80

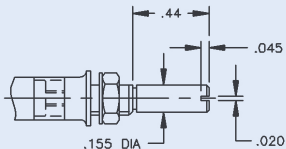
## Optional Configurations

### INSULATED BUSHING



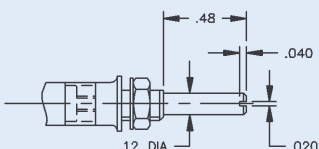
Insert "I" Between "T" and "M" in Type Number (i.e. TIM9C)

### EXTENDED PLASTIC SHAFT



Add "EI" to End of Type Number (i.e. TM9EI)

### EXTENDED METAL SHAFT



Add "E" to End of Type Number (i.e. TM9CE)

# "TM" & "QM" SERIES - Panel Mount Glass and Quartz Trimmer Capacitors

## GLASS ANNULAR BAND

Capacitance Range (pF)		Q (Min.) 1 MHz	UNSEALED 750 DC Working Voltage (Fig. 1)			SEALED, METAL CAP, TURRET TERMINAL 750 DC Working Voltage (Fig. 2)		SEALED, GLASS END, 1,250 DC Working Voltage (Fig. 3)		
From Below	To Above		A ± .03	Type	MIL Designation	A ± .03	Type	A ± .03	Type	MIL Designation
0.8	4.5	650	.31	TM5	PC40J4R5**	.41	TM5C	.36	TM5G	PC38J4R5**
0.8	5.5	700	.31	TM6	PC50J5R5	.41	TM6C	.36	TM6G	PC48J5R5
0.8	8.5	650	.55	TM9	PC40JIR5**	.63	TM9C	.59	TM9G	PC38J8R5**
1.0	11.0	700	.55	TM11	PC50J110	.63	TM11C	.59	TM11G	PC48J110
0.8	12.0	650	.75	TM12	PC40H120**	.83	TM12C	.81	TM12G	PC38H120**
0.8	16.0	700	.75	TM17	PC50H160	.83	TM17C	.81	TM17G	PC48H160
0.8	18.0	650	1.00	TM18	PC40H180**	1.09	TM18C	1.06	TM18G	PC38H180**
0.8	21.0	700	1.13	TM21	--	1.22	TM21C	--	--	--
0.8	23.0	700	1.00	TM23	PC50H230	1.09	TM23C	1.06	TM23G	PC48H230
0.8	30.0	650	1.59	TM30	PC40H300**	1.69	TM30C	1.66	TM30G	PC38H300**
0.8	38.0	700	1.59	TM38	PC50H380	1.69	TM38C	1.66	TM38G	PC48H380

## GLASS EMBEDDED BAND

Capacitance Range (pF)		Q (Min.) 1 MHz	UNSEALED 1,000 DC Working Voltage (Fig. 1)		SEALED, METAL CAP, TURRET TERMINAL 1,000 DC Working Voltage (Fig. 2)			SEALED, METAL CAP 1,000 DC Working Voltage (Fig. 4)	
From Below	To Above		A ± .03	Type	A ± .03	Type	MIL Designation	A ± .03	Type
2.0	10.0	800	.28	TM10*	.37	TM10C*	--	.35	TM10M*
1.5	14.0	700	.38	TM14	.47	TM14C	--	.45	TM14M
1.2	16.0	800	.33	TM15*	.42	TM15C*	--	.40	TM15M*
1.0	16.0	800	.38	TM16	.47	TM16C	PC39G160	.45	TM16M
2.0	25.0	800	.42	TM25	.52	TM25C	--	.50	TM25M
1.0	28.0	700	.61	TM28	.70	TM28C	--	.69	TM28M
1.0	36.0	800	.61	TM36	.70	TM36C	PC39G360	.69	TM36M
1.0	42.0	700	.83	TM42	.92	TM42C	--	.91	TM42M
1.0	52.0	800	.83	TM52	.92	TM52C	PC39G520	.91	TM52M
1.0	60.0	650	1.08	TM60	1.17	TM60C	--	1.16	TM60M
3.0	75.0	700	1.08	TM75	1.17	TM75C	PC39G750	1.16	TM75M
1.0	90.0	600	1.67	TM90	1.77	TM90C	--	1.75	TM90M
1.0	120.0	600	1.67	TM120	1.77	TM120C	PC39G121	1.75	TM120M
2.0	180.0	500	1.91	TN180*	2.00	TM180C*	--	1.98	TM180M*

## QUARTZ

Capacitance Range (pF)		Q (Min.) 1 MHz	UNSEALED 750 DC Working Voltage (Fig. 1)			SEALED, QUARTZ END, 1,250 DC Working Voltage (Fig. 3)		
From Below	To Above		A ± .03	Type	MIL Designation	A ± .03	Type	MIL Designation
0.6	1.8	2000	.30	QM2	PC40Q1R8	.36	QM2G	PC38Q1R5
0.8	5.5	2000	.55	QM6	PC40Q5R5	.63	QM6G	PC38Q5R5
0.6	9.5	2000	.98	QM10	PC40Q9R5	1.06	QM10G	PC38Q9R5
0.8	16.0	2000	1.59	QM16	PC40Q160	1.66	QM16G	PC38Q160

\*Parts Rated 500 DC Working Voltage

\*\*MIL-C-14409B parts not listed in MIL-C-14409D