

# "K" & "KE" SERIES - Air Trimmer Capacitors

FIG. 1

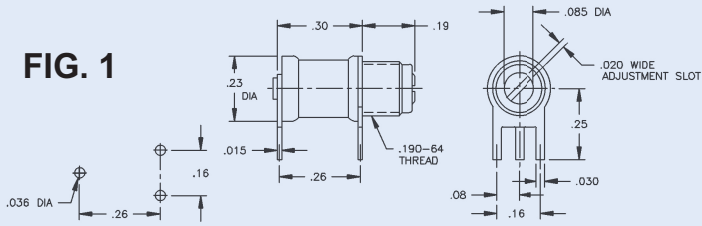


FIG. 2

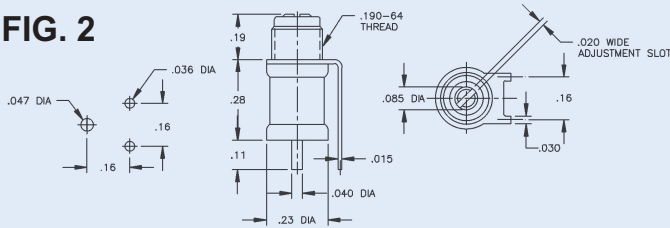


FIG. 3

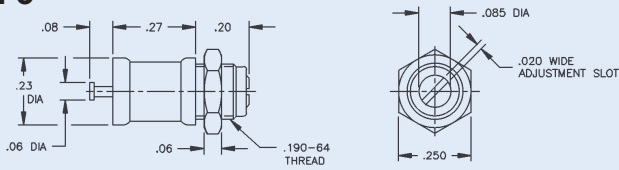


FIG. 4

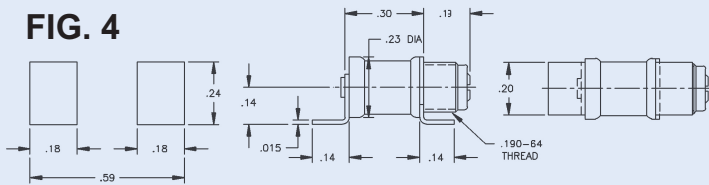


FIG. 5

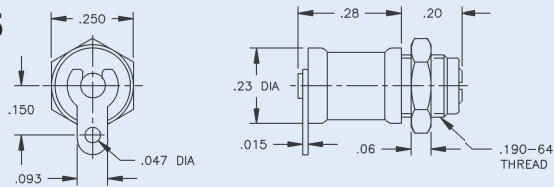


FIG. 6

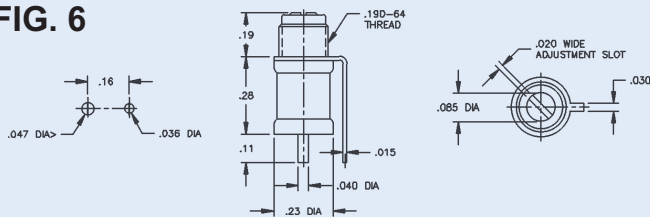
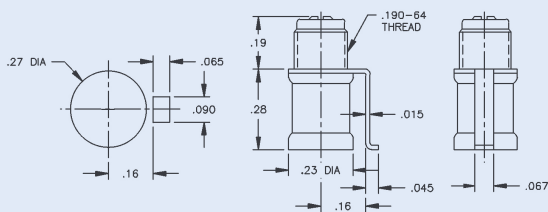


FIG. 7



Part Number		Capacitance (pF)	
"K" Series	"KE" Series	From Below	To Above

FIG. 1

KP8	KEP8	0.6	8.0
KP10	KEP10	0.6	10.0

FIG. 2

KF8	KEF8	0.6	8.0
KF10	KEF10	0.6	10.0

FIG. 3

KT8	KET8	0.6	8.0
KT10	KET10	0.6	10.0

FIG. 4

KJ8	KEJ8	0.6	8.0
KJ10	KEJ10	0.6	10.0

FIG. 5

KT8L	KET8L	0.6	8.0
KT10L	KET10L	0.6	10.0

FIG. 6

KG8	KEG8	0.6	8.0
KG10	KEG10	0.6	10.0

FIG. 7

KM8	KEM8	0.6	8.0
KM10	KEM10	0.6	10.0

IN	MM	IN	MM	IN	MM
0.015	0.38	0.080	2.03	0.230	5.84
0.030	0.76	0.093	2.36	0.240	6.10
0.036	0.91	0.110	2.79	0.250	6.35
0.040	1.02	0.140	3.56	0.260	6.60
0.045	1.14	0.150	3.81	0.270	6.86
0.060	1.52	0.160	4.06	0.280	7.11
0.065	1.65	0.180	4.57	0.300	7.62
0.067	1.70	0.190	4.83	0.590	14.99
0.070	1.78	0.200	5.08		

Recommended Tuning tool: TT-100 or TT-500

NOTE: All bushing threads are .190"-64