

"A" & "E" SERIES - Air Trimmer Capacitors

FIG. 1

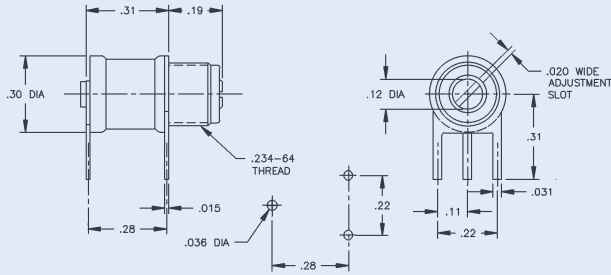


FIG. 1

Part Number	MIL Designation	Capacitance (pF)	
		From Below	To Above
AP5		1.0	5.0
AP10	PC18L100	1.0	10.0
AP14	PC18L140	1.0	14.0
EP5		0.8	5.0
EP10		0.8	10.0
EP14		0.8	14.0

FIG. 2

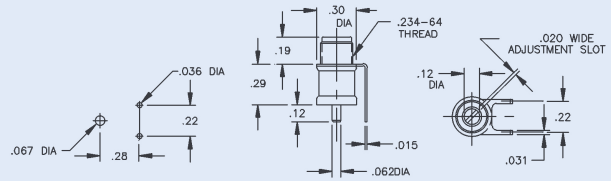


FIG. 2

AF5		1.0	5.0
AF10	PC19L100	1.0	10.0
AF14	PC19L140	1.0	14.0
EF5		0.8	5.0
EF10		0.8	10.0
EF14		0.8	14.0

FIG. 3

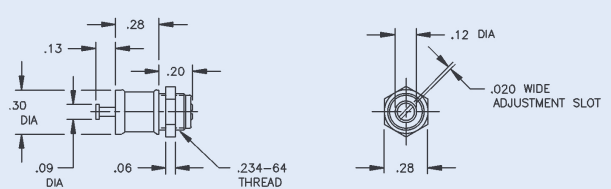


FIG. 3

AT5		1.0	5.0
AT10	PC47L100	1.0	10.0
AT14	PC47L140	1.0	14.0
ET5		0.8	5.0
ET10		0.8	10.0
ET14		0.8	14.0

FIG. 4

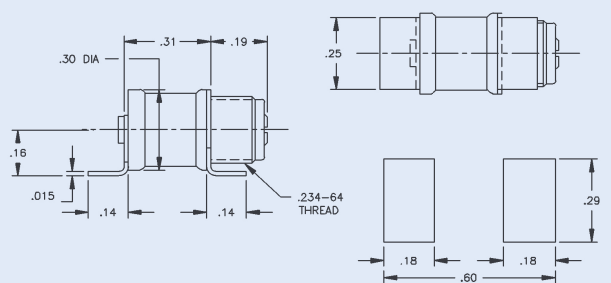


FIG. 4

AJ5		1.0	5.0
AJ10	PC46L100	1.0	10.0
AJ14	PC46L140	1.0	14.0
EJ5		0.8	5.0
EJ10		0.8	10.0
EJ14		0.8	14.0

FIG. 5

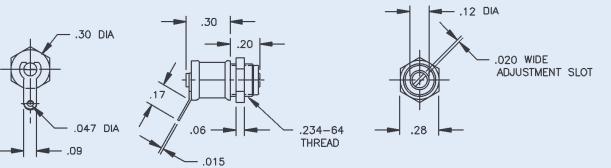
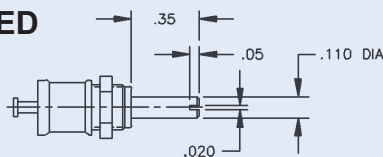


FIG. 5

AT5L		1.0	5.0
AT10L		1.0	10.0
AT14L		1.0	14.0
ET5L		0.8	5.0
ET10L		0.8	10.0
ET14L		0.8	14.0

NOTE: All bushing threads are .234"-64

EXTENDED METAL SHAFT



EXTENDED SHAFT OPTIONS

Extended Metal Shaft: Add "E" to Part Number, i.e., AT10E.

Extended Plastic Shaft: Add "EI" to Part Number, e.i., EF10EI. (Same as metal shaft except .44" by .16" dia.)

FIG. 6

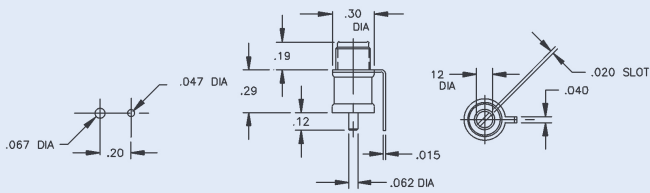


FIG. 7

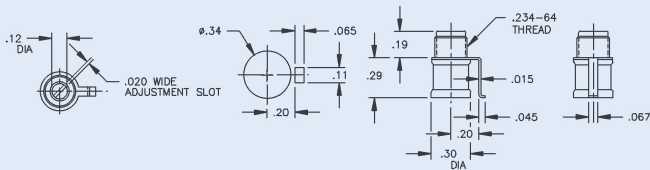


FIG. 8

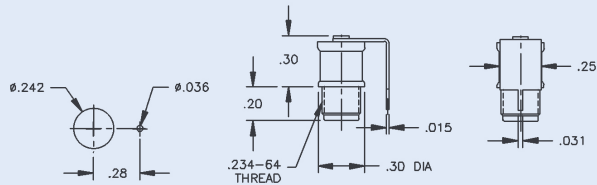


FIG. 9

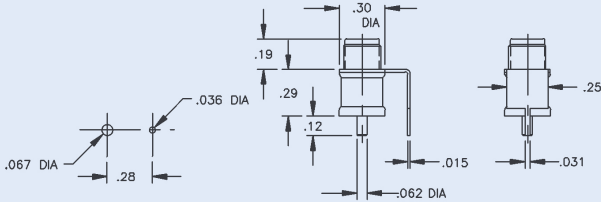
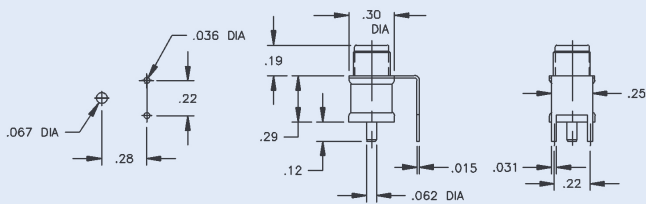


FIG. 10



INSULATED BUSHING

Insert "I" in Part Number, i.e., AIT10L

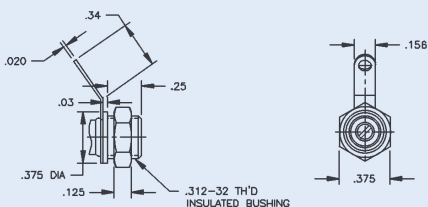


FIG. 6

Part Number	Old Part Number	Capacitance (pF)	
		From Below	To Above
AB5		1.0	5.0
AB10	V3116	1.0	10.0
AB14	V3117	1.0	14.0
EB5		0.8	5.0
EB10	V5051	0.8	10.0
EB14	V5105	0.8	14.0

FIG. 7

AM5		1.0	5.0
AM10		1.0	10.0
AM14		1.0	14.0
EM5		0.8	5.0
EM10		0.8	10.0
EM14		0.8	14.0

FIG. 8

AC5		1.0	5.0
AC10	V3067	1.0	10.0
AC14	V3066	1.0	14.0
EC5		0.8	5.0
EC10	V5086	0.8	10.0
EC14	V5139	0.8	14.0

FIG. 9

AD5		1.0	5.0
AD10	V3168	1.0	10.0
AD14	V3228	1.0	14.0
ED5		0.8	5.0
ED10	V5087	0.8	10.0
ED14	V5143	0.8	14.0

FIG. 10

AE5		1.0	5.0
AE10	V3239	1.0	10.0
AE14	V3193	1.0	14.0
EE5		0.8	5.0
EE10	V5146	0.8	10.0
EE14	V5147	0.8	14.0

<u>IN</u>	0.015	0.020	0.03	0.031	0.036	0.40	0.047	0.05	0.06	0.062	0.067	0.09
<u>MM</u>	0.38	0.51	0.76	0.79	0.91	1.02	1.19	1.27	1.52	1.57	1.70	2.29
<u>IN</u>	0.11	0.12	0.125	0.13	0.14	0.16	0.17	0.19	0.20	0.22	0.242	0.25
<u>MM</u>	2.79	3.05	3.18	3.30	3.56	4.06	4.32	4.83	5.08	5.59	6.15	6.35
<u>IN</u>	0.28	0.29	0.30	0.31	0.34	0.48						
<u>MM</u>	7.11	7.37	7.62	7.87	8.64	12.19						