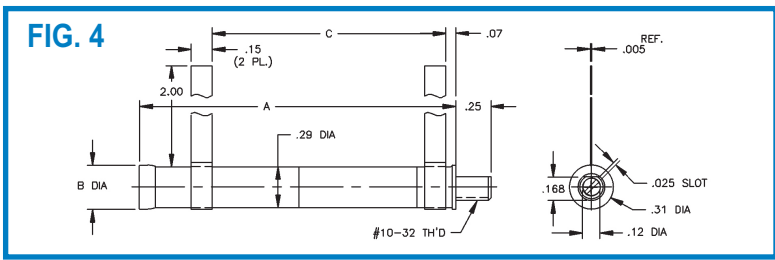
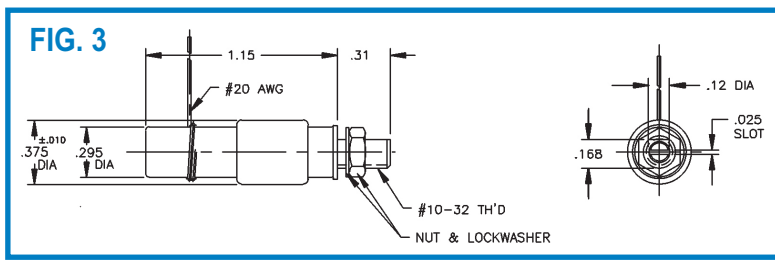
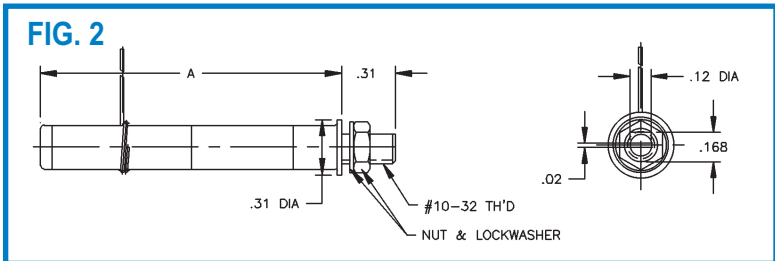
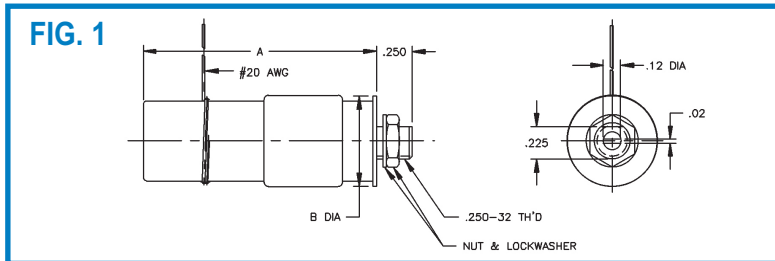


# High Voltage Non-magnetic Trimmer Capacitors

Part Number	Capacitance (pF)		Q (Min) 25 MHz.	DC Working Voltage	DC Withstanding Voltage	Dielectric	Fig.	"A" Dim. ± .016	"B" Dim. ± .016	"C" Dim. ± .03
	From Below	To Above								
NMNT1-20*	1	2	2000	10000	20000	PTFE	1	1.185	1.125	--
NMNT5-8	1	5	2000	4000	8000	PTFE	3	--	--	--
NMNT5-18	1	5	1800	8750	17500	PTFE	1	2.00	0.75	--
NMNT10-3	1	10	3500	1500	3000	PTFE	2	1.69	0.31	--
NMNT10-4	1	10	3500	2000	4000	PTFE	2	1.69	0.31	--
NMNT10-6	1	10	2000	3000	6000	PTFE	1	1.15	0.38	--
NMNT10-7	1	10	2000	3500	7000	PTFE	1	1.85	0.38	--
NMNT10-12	2	10	1800	6000	12000	PTFE	1	1.83	0.63	--
NMNT10-15	1	10	2000	7500	15000	PTFE	1	1.85	0.50	--
NMNT15	1	15	2000	2000	4000	PTFE	2	1.69	0.31	--
NMNT20-9	3	20	2300	4500	9000	PTFE	1	1.24	0.63	--
NMNT23-6	3	23	2200	3000	6000	PTFE	1	1.70	0.38	--
NMNT25-6	5	25	2000	3000	6000	PTFE	1	1.62	0.63	--
NMNT25-12	7	25	1500	6000	12000	PTFE	1	1.77	1.13	--
NMNT30	4	30	1200	3000	6000	PTFE	1	2.25	1.50	--
NMNT48-4-2RL	1.5	48		2500	3600	PTFE	4	2.25	0.31	1.66
NMNT50	5	50	700	4500	9000	PTFE	1	2.25	1.50	--
NMNT70-6	2.5	70	650	3000	6000	PTFE	1	3.00	0.70	--
NMNT70-15	6.5	70	650	7500	15000	PTFE	1	3.25	1.63	--
NMNT85	5	85	600	3000	6000	PTFE	1	3.25	1.50	--
NMNT100-4-2RL	2.0	100		2500	3600	PTFE	4	4.25	0.31	3.00

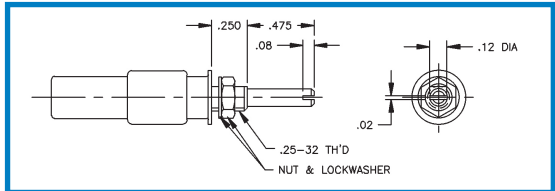


## RECOMMENDED TUNING TOOLS

Consult factory for Non-Magnetic tuning tools

## EXTENDED SHAFT OPTION

Add "E" to end of part number.



<b>IN</b>	0.010	0.016	0.020	0.036	0.067	0.070	0.090	0.120	0.130	0.150	0.160	0.167	0.220	0.025	0.235	0.250	0.281	0.295	0.310
<b>MM</b>	0.25	0.41	0.51	0.91	1.70	1.78	2.29	3.05	3.30	3.81	4.06	4.24	5.59	5.72	5.97	6.35	7.14	7.49	7.87
<b>IN</b>	0.375	0.380	0.400	0.450	0.500	0.530	0.630	0.700	0.750	0.800	1.000	1.090	1.125	1.150	1.160	1.170	1.185	1.210	1.240
<b>MM</b>	9.52	9.65	10.16	11.43	12.70	13.46	16.00	17.78	19.05	20.32	25.40	27.69	28.57	29.21	29.46	29.72	30.10	30.73	31.50
<b>IN</b>	1.300	1.380	1.450	1.480	1.500	1.620	1.630	1.670	1.690	1.700	1.770	1.830	1.850	2.000	2.250	2.800	3.000	3.250	
<b>MM</b>	33.02	35.05	36.83	37.59	38.10	41.15	41.40	42.42	42.93	43.18	44.96	46.48	46.99	50.80	57.15	71.12	76.20	82.55	